

HiSOLO

Designed to meet variety of needs

It is more than a SOLAR SURVEILLANCE TOWER, it is MOBILE SOLAR ENERGY feature with:

- Communication
- Power Supplying
- Lighting



YOUR SECURITY OUR PRIORITY





Scan For Video



HiSOLO

Mobile Solar Surveillance Trailer Tower

What makes **HiSOLO** different ?

Because it is simply better by design

- Self-powered, movable, wide application
- Smarter HiEYE management software
- Rotated and tilted solar panels
More efficient use of solar power
- Larger capacity, longer life
- Higher mast, wider monitoring coverage
- Built-in design, no worry about damage
- More container loading, less freight
- Multiple business models: Rental, Sale, Own, Lease

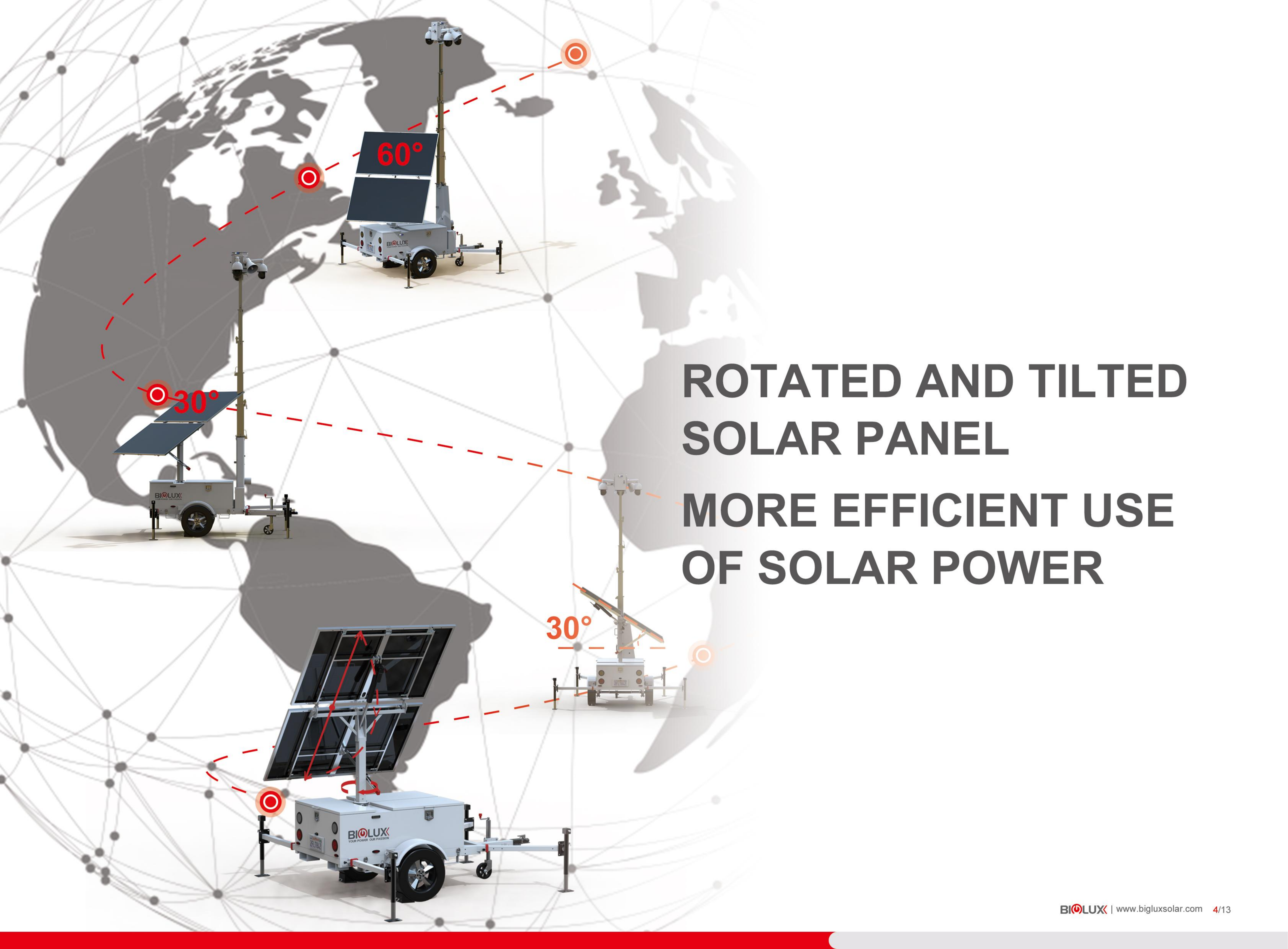


SELF-POWERED MOVABLE WIDE APPLICATIONS



SMART **HIEYE** MANAGEMENT SOFTWARE

ROTATED AND TILTED SOLAR PANEL MORE EFFICIENT USE OF SOLAR POWER



Consistently work

168

Hours for 60W.

Ultra large capacity

12000

Wh.

**LARGER
CAPACITY
LONGER LIFE**



HISOLO
MULTI-CHARGING
SYSTEM

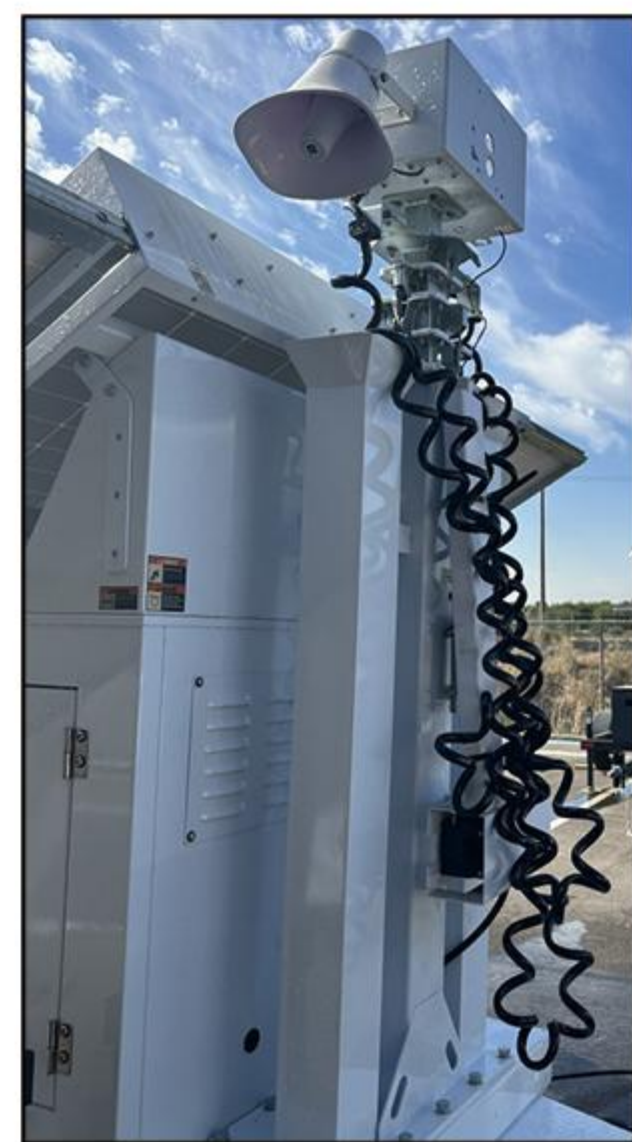
THREE-WAY OF CHARGING

Ensure the system operate perpetually

Where is the cable?

BUILT-IN DESIGN TELESCOPIC MAST

No worry about damage or cutting of cable



Other's Cable



BIGLUX built-in cable





MORE CONTAINER LOADING LESS FREIGHT



GET
RICH
WITH
LOW RISK

**RENTAL
SALE
OWN
LEASE**

Flexible and multiple business models
for low investment and high return

HiSOLO™

MOBILE SOLAR CCTV TOWER

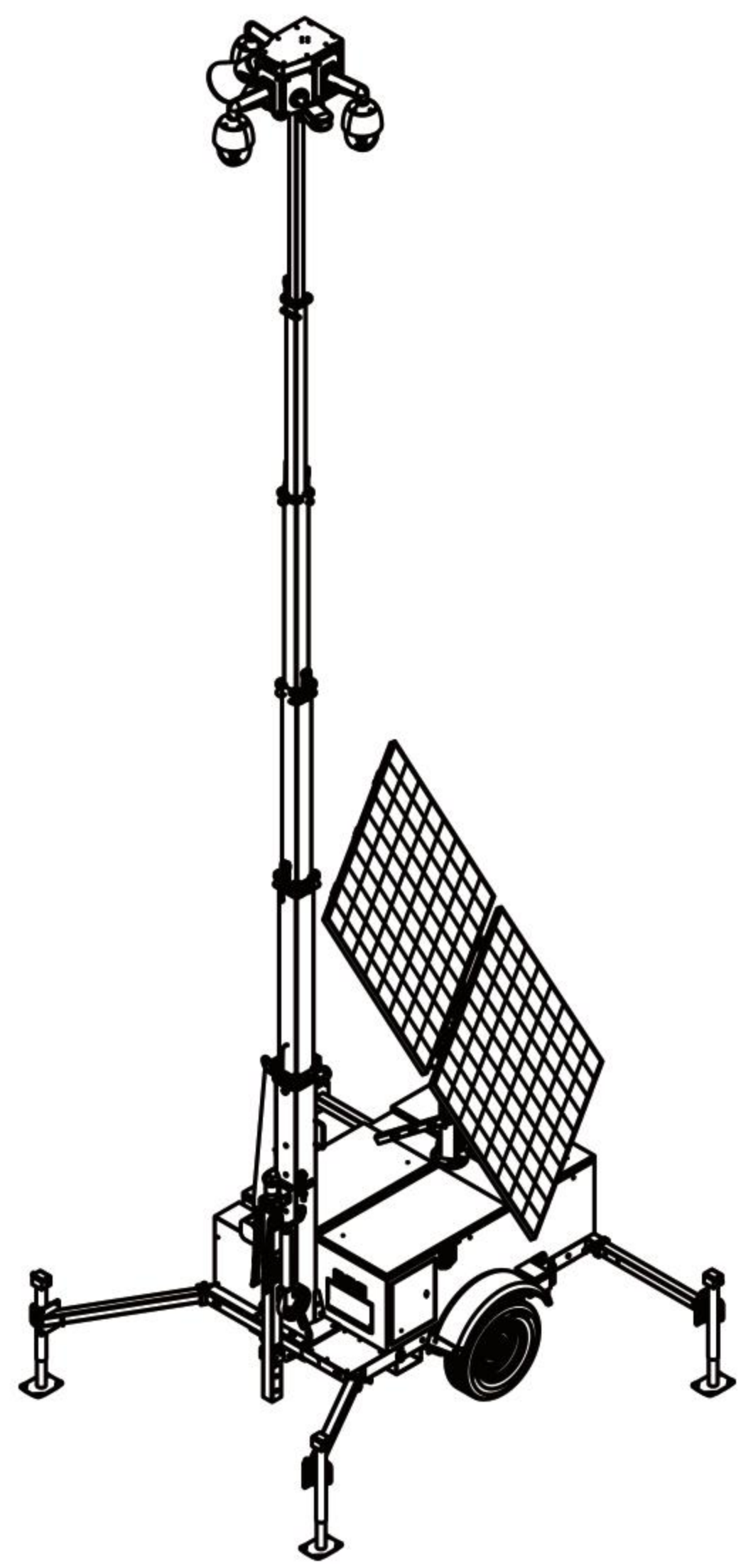
Rental. Sale. Own. Lease

- No Electricity
- No Network
- No Fuel
- No Problem!



PRODUCT SKETCH

TECHNICAL DATA



BASIC VERSION	BL2P-G7MHSS0B	BL2P-L7MHSS0B
Solar		
Solar Panel	2×450W, Bifacial	
Panel Rotating	180° Manual	
Panel Tilting	30°-60° Electrical	
MPPT Controller	50A-E With Remote Battery Monitoring	
Estimated Solar Charging Time	9 hours	
Battery		
Battery Type	GEL	LFP
Battery Capacity	9600WH	8038WH
Battery AC Charger	1.5kW, AC110V/230V	
System Voltage	DC 24V	
Available Voltage	DC 24V,48V	
DC-to-AC Inverter	450W Rated	
Battery Backup Time	72 Hours Under 90W Load	
Telescopic Mast		
Mast Height	6.5M	
Lifting Winch	Manual	
Material	Hot-dip Galvanized Steel	
Feature	Build in Wiring	
CCTV		
CCTV BOX	350° Rotatable, 6-sided, back-opened	
Strobe Light	Blue&White	
Included Accessories	8-Port POE Switch	
Optional Accessories	Cameras, NVR, 4G Router, Loud Speaker	
General		
Working Temp	-20°C~55°C	
Extended Dimensions	3522*3246*7232mm	
Retracted Dimensions	3522*1630*2880mm	
Gross Weight	1000KG	
QTY in 20' / 40'	6 units / 14 units	

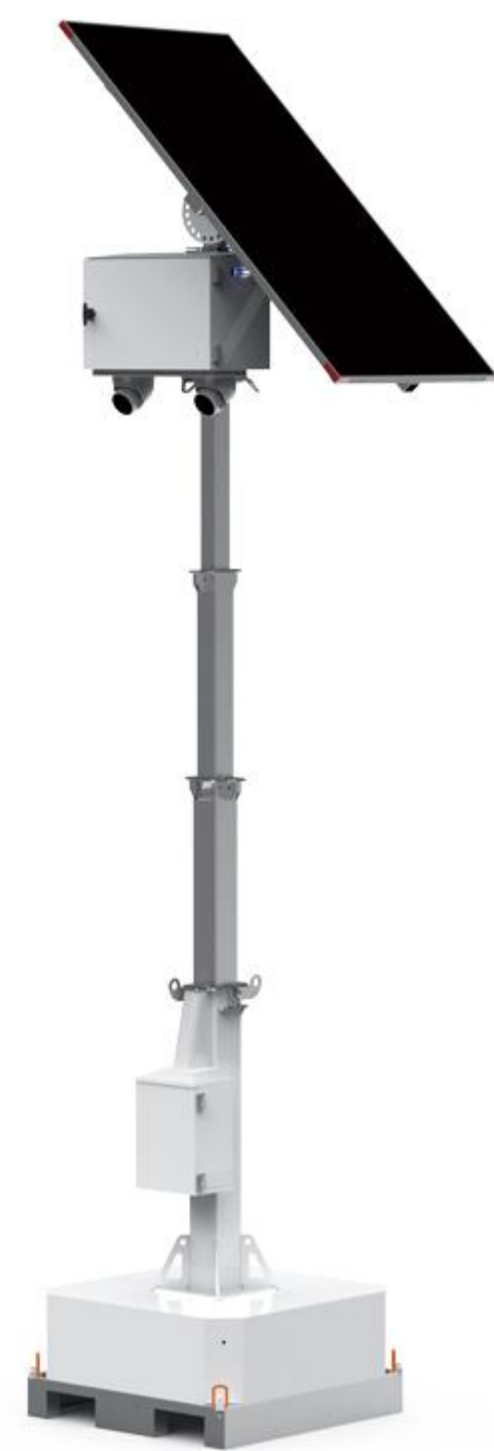
PRO VERSION	BL2P-G9EHSS0P	BL2P-L9EHSS0P
Solar		
Solar Panel	2×600W, Bifacial	
Panel Rotating	180° Manual	
Panel Tilting	30°-60° Electrical	
MPPT Controller	45A-V With Remote Battery Monitoring	
Estimated Solar Charging Time	10 hours	
Battery		
Battery Type	GEL	LFP
Battery Capacity	12000WH	14336WH
Battery AC Charger	1.5kW, AC110V/230V	
System Voltage	DC 24V	
Available Voltage	DC 24V,48V	
DC-to-AC Inverter	450W Rated	
Battery Backup Time	72 Hours Under 133W Load	
Telescopic Mast		
Mast Height	8.5M	
Lifting Winch	Electrical	
Material	Hot-dip Galvanized Steel	
Feature	Build in Wiring	
CCTV		
CCTV BOX	350° Rotatable, 6-sided, back-opened	
Strobe Light	Blue&White	
Included Accessories	8-Port POE Switch	
Optional Accessories	Cameras, NVR, 4G Router, Loud Speaker	
General		
Working Temp	-20°C~55°C	
Extended Dimensions	4037*3246*9350mm	
Retracted Dimensions	4037*1630*3100mm	
Gross Weight	1100KG	
QTY in 20' / 40'	6 units / 14 units	

MORE OPTIONS

Mobile Solar CCTV Solutions



HiTOP™



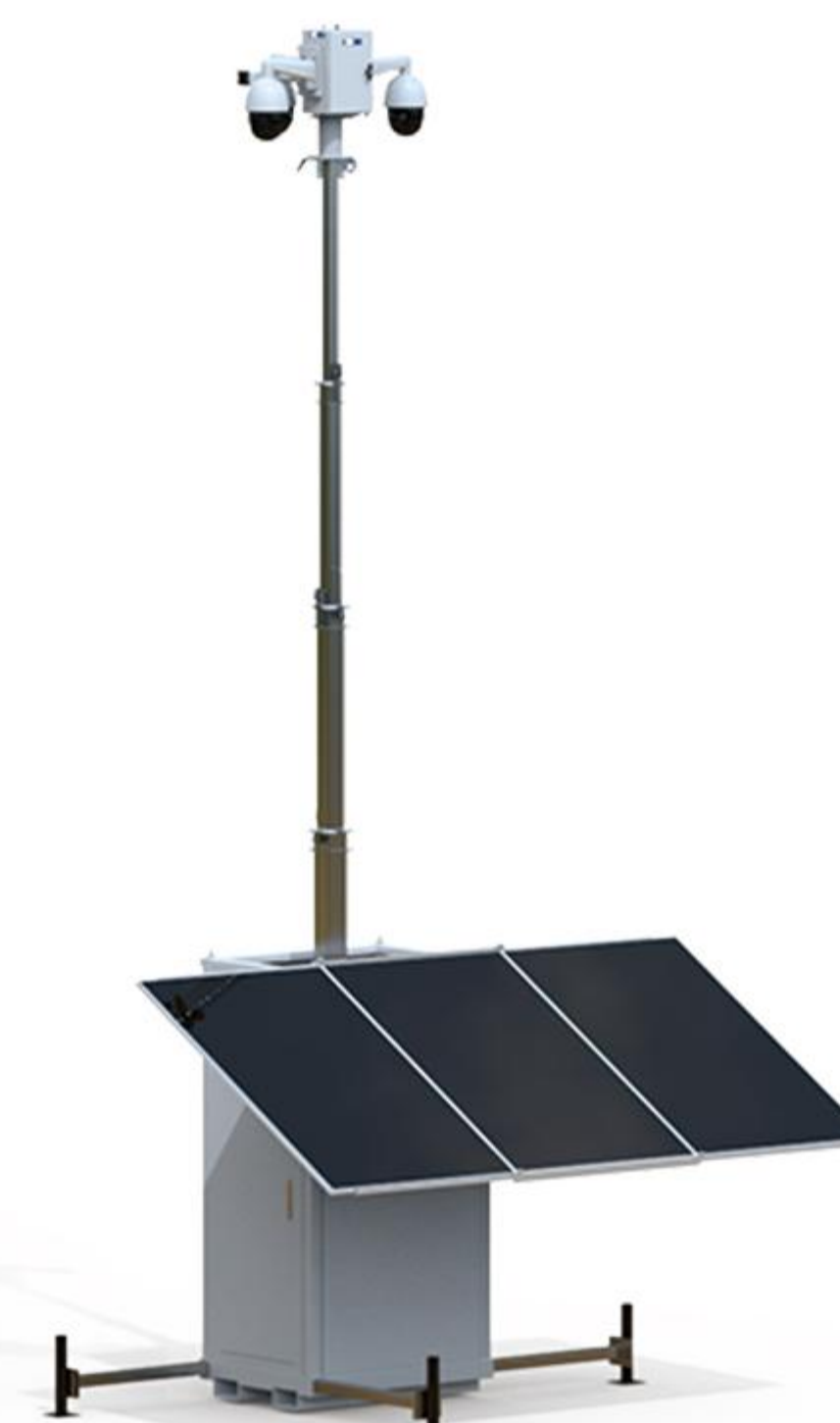
HiGUARD™



HiSKID-II™



HiSKID-III™



HiCUBE™



HiSTAR-V™

SOLUTIONS

MOBILE SOLAR CCTV TOWER

Rental. Sale. Own. Lease

BIGLUX develops and implements specific & innovative mobile solar tower and mobile solar generator solutions for different commercial and industrial applications. By adopting the latest renewable energy technologies, BIGLUX integrated solar and battery system to develop and implement the most energy saving renewable mobile solar power systems to work as solar surveillance tower, solar lighting tower, solar generator, solar telecom tower solutions for multiple applications:

- Outdoor Parking Lots
- Traffic Monitoring
- Construction Sites
- Emergency Rescue
- Public Security
- Sports and Events
- Forest Fire Prevention
- Military Bases
- Mining and Oil
- Refuse Disposal Plants
- Logistics Centers
- Defense Frontiers
- Airports
- Camping
- Agriculture
- Telecom
- Industry
- Data Centers



INNOVATION DRIVEN, QUALITY ORIENTED

By adopting the latest SOLAR TRAILER and TOWER technology, BIGLUX develops and implements the most energy saving solar light tower, solar surveillance tower and other mobile power solutions for construction site, parking lot, sports, events and emergency applications etc.

5A WE HAVE

- A strong expertise in SOLAR TRAILER and MOBILE POWER latest technologies
- A broad experience in SOLAR TRAILER and MOBILE POWER applications
- An insatiable thirst for smart intelligent controlled SOLAR TOWER system
- A background of over 10 years' experience in SOLAR and MOBILE TRAILER industry
- A great heart of contribution to the world by renewable energy

Headquarter in ShenZhen, China, BIGLUX services clients from all over the world.





BIGLUX INNOVATION LTD

www.bigluxsolar.com

www.bigluxled.com

WhatsApp: +86 188 1878 5601

Email: info@bigluxsolar.com

Add: Building 6, No. 34 Guanghui Road, Longteng Community, Shiyan Street, Bao'an District, Shenzhen, China
